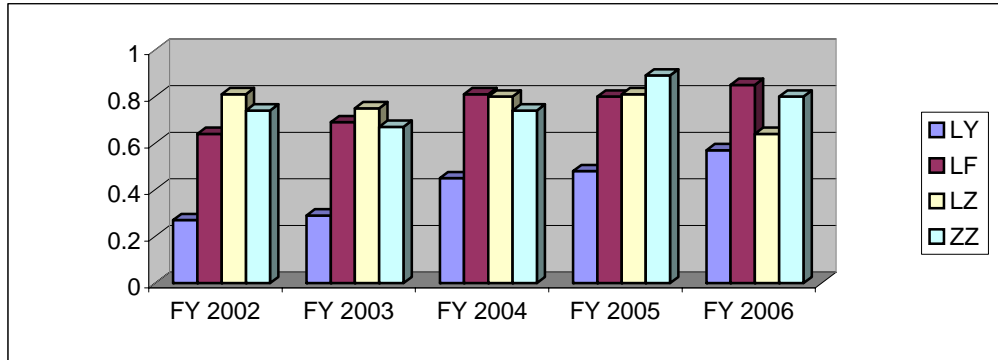
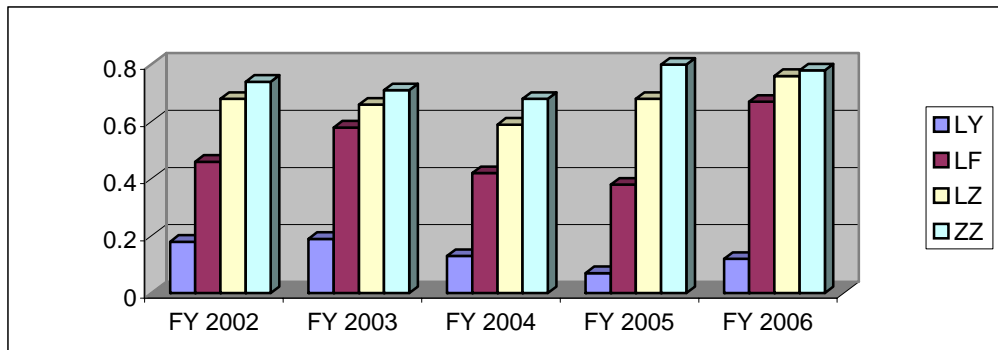


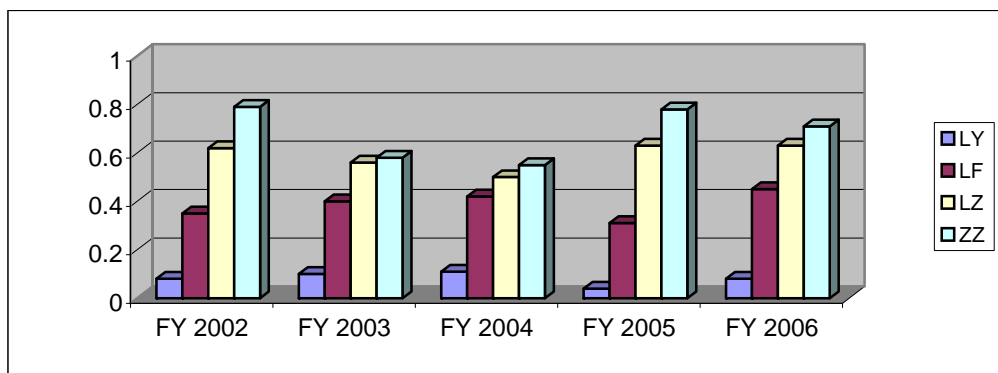
**4TH Grade FCAT Reading
Percent of Students Meeting or Exceeding Level 2 Standard**



**8th Grade FCAT Reading
Percent of Students Meeting or Exceeding Level 2 Standard**



**10th Grade FCAT Reading
Percent of Students Meeting or Exceeding Level 2 Standard**



- LY Active Limited English Proficient Students
- LF Former Limited English Proficient Students in two year post reclassification monitoring
- LZ Former Limited English Proficient Students
- ZZ Non-Limited English Proficient Students